

# Discover Freeport Parks and Recreation

April - August 2016



<b>General Information</b> . . . . .	3	<b>Adult Special Interest/Instructional</b>	
<b>Special Events</b>		Tai Chi . . . . .	16
Bunny Trail . . . . .	4	<b>Adult Art Classes</b>	
Pretzel City 5K . . . . .	4	Watercolor . . . . .	16
Autumn Leaf Run . . . . .	4	Summer Landscape . . . . .	16
Movies in the Park . . . . .	5	Still Life . . . . .	16
Freeport Concert Band . . . . .	5	Starting Out in Astronomy . . . . .	17
Freeport Chorale Society . . . . .	5	Earth Month 2016 . . . . .	17
Family Camp Out in Krape Park . . . . .	5	<b>Special Recreation</b>	
Navy Pier Bus Trip . . . . .	6	Bowling Buddies . . . . .	18
Gold Coast Art Fair Bus Trip – Grant Park		Snack and Swim . . . . .	18
Chicago . . . . .	6	<b>Special Recreation Dances</b>	
Chicago Cubs Trips . . . . .	6	Springtime Luau . . . . .	18
Art in the Park . . . . .	7	Night Under the Stars . . . . .	19
<b>Aquatics Programs</b>		Food and a Flick . . . . .	19
Swim Lessons - Level 1 . . . . .	8	Pop and Paint . . . . .	19
Swim Lessons - Level 2 . . . . .	8	<b>Special Olympics</b>	
Swim Lessons - Level 3 . . . . .	8	SO Softball . . . . .	19
Swim Lessons - Level 4 . . . . .	9	SO Bowling . . . . .	19
Swim Lessons - Level 5 . . . . .	9	SO Volleyball . . . . .	20
Swim Lessons - Level 6 . . . . .	9	NASR Bowling Tournament . . . . .	20
Little Fins . . . . .	10	Cupcake Decorating . . . . .	20
Parent-Tot Swim Lessons . . . . .	10	TR's Got Talent . . . . .	20
Beginning Diving Lessons . . . . .	10	Sunshine Through Golf . . . . .	20
Adult Swim Lessons . . . . .	11	Memorial Day Parade . . . . .	21
Aquacize . . . . .	11	<b>Art with the Pros</b>	
Lifeguard Certification . . . . .	11	Painting to Music . . . . .	21
<b>Youth Programs</b>		Two Part Clay Pots . . . . .	21
<b>Youth Art Classes</b>		Boulders Climbing Gym . . . . .	21
Carousel Horses . . . . .	12	Master Gardeners . . . . .	21
Making Music . . . . .	12	<b>Program Registration</b> . . . . .	22
Youth Soccer Instruction . . . . .	12	<b>Read Park Family Aquatic Center</b> . . . . .	23
T-ball . . . . .	12	<b>Krape Park</b>	
Youth Tennis Lessons . . . . .	13	Yellow Creek Adventure Golf . . . . .	24
Sports Sampler . . . . .	13	Krape Park Carousel . . . . .	24
Earth Month 2016 . . . . .	13	Boat Rental . . . . .	24
<b>Martial Arts</b>		Disc Golf at Krape Park . . . . .	24
Little Ninjas . . . . .	14	<b>Park Hills Golf Course</b> . . . . .	25
Tae Kwon Do . . . . .	14	<b>Stephenson County Museum</b> . . . . .	26
<b>Adult Athletics</b>		<b>Oakdale Nature Preserve</b> . . . . .	27
Men's Softball League . . . . .	15	<b>Jane Addams Trail</b> . . . . .	27
Women's Softball League . . . . .	15	<b>Facility Rentals</b> . . . . .	28
Over 30 16" Softball League . . . . .	15	<b>Affiliated Organizations</b> . . . . .	30
Foot Golf League . . . . .	15	<b>Park District Map</b> . . . . .	31



**MISSION STATEMENT**

The mission of the Freeport Park District is to promote the use of recreation in generating an exciting, dynamic quality of life by providing the highest quality facilities and programs to meet the ever-changing needs and interests of individuals of all ages and abilities. The Park District will preserve and protect land and resources for the enrichment of the community and future generations.

**OFFICE HOURS**

The Park District's administrative office is located at 1122 S. Burchard Avenue. Regular office hours are 8:00 AM - 5:00 PM Monday through Friday.

**INFORMATION HOTLINES**

Read Park Family Aquatic Center	(815) 235-6114, Ext. 2
Krape Park Miniature Golf	(815) 235-6114, Ext. 3
Park Hills Golf Course	(815) 235-6114, Ext. 6
Sports Information	(815) 235-6114, Ext. 7
Ice Skating & Sledding	(815) 235-6114, Ext. 8

**IMPORTANT PHONE NUMBERS**

Park District Office	(815) 235-6114
FAX Machine	(815) 233-9210
Krape Park Miniature Golf	(815) 801-PUTT (7888)
Park Hills Golf Course	(815) 235-3611
Read Park Family Aquatic Center	(815) 801-SWIM (7946)
Stephenson County Historical Society	(815) 232-8419

**BOARD OF COMMISSIONERS**

Dana Stewart	President
Tom Jungen	Vice President
Ken Collin	Commissioner
George Yartzak	Commissioner
Debbie Schwartz	Commissioner

**BOARD MEETINGS**

The Park Board generally meets on the first and third Tuesdays of each month at 6:30 pm at the Park District Administration Building at 1122 S. Burchard Avenue. The public is invited to attend.

**STAFF**

Jack Carey, Executive Director	ext. 104
Vickie Witt, Office Manager	ext. 102
Steve Ehlbeck, Superintendent of Parks	ext. 103
Merle Hull, Maintenance Supervisor	ext. 130
Ron Schneider, Superintendent of Recreation	ext. 105
Berin Jackson, Athletics Supervisor	ext. 109
Tania Tomilonus, Therapeutic & Community Recreation Supervisor	ext. 108
Dave Fisher, Superintendent of Golf	
Jeff Hartman, Golf Professional	
Rick Fago, Assistant Greenskeeper	
Tim Jacobs, Assistant Greenskeeper	

**RESIDENCY POLICY**

For purposes of registering for a Freeport Park District program, renting a District facility or purchasing a District service at the resident rate, the individual's primary residence must be within the Freeport Park District boundaries. Any owner of real estate within the boundaries of the Freeport Park District and paying taxes to the Freeport Park District, but residing outside the boundaries of the District, shall receive the resident rate, as will his immediate family. Immediate family defined as spouse and/or children residing with property owner. Proof shall be required in the form of property tax bill and photo identification.

**GIFT CERTIFICATES**

Freeport Park District gift cards are great for any occasion and can be used towards recreation program registrations, season passes, facility rentals and admissions. Gift cards can be purchased for any denomination and quantity. To purchase a gift card, please visit the Freeport Park District office or call us at 815-235-6114 ext. 0.

**AMERICANS WITH DISABILITIES ACT**

If you need assistance in accordance with the Americans with Disabilities Act, please contact the Freeport Park District Office or state your need when registering for a Freeport Park District program.

**PHOTO POLICY**

Occasionally, Park District staff may videotape or photograph participants enrolled in programs, classes, events or enjoying park facilities. These photographs are for Park District publications, flyers, brochures and future promotional materials. All photos and videos taken on Park District property are for Park District use and become its sole property.

**FINANCIAL AID**

The Freeport Park District recognizes the need within our community to provide assistance to residents who do not have the financial resources to participate in the fee-based services we provide. Financial Aid is available for Freeport Park District residents who meet the District's Financial Aid program guidelines. Financial Aid Guidelines and Application are available at the Freeport Park District Office.

**EQUAL OPPORTUNITY**

Persons believing that they have been discriminated against by Freeport Park District on the basis of color, sex, race, national origin or handicap may file a complaint with Freeport Park District or the Office of Equal Opportunity, U.S. Department of the Interior, Washington, D.C.

**DONATION POLICY**

The Freeport Park District is committed to partnering, collaborating and supporting local non-profit organizations whose activities support or enhance leisure opportunities for the Freeport community. All donation requests shall be submitted to the Board of Commissioners through the Executive Director no later than 30 days prior to the date of the event or need.

**GENERAL USE REGULATIONS**

A complete set of rules and regulations regarding the Freeport Park District is on file and available for public use at the Administrative Office located at 1122 S. Burchard Avenue. Residents are welcome to stop by and pick up a copy for their personal use.

**PUBLIC NUISANCE REGULATIONS**

The Freeport Park District is committed to operating our parks in a safe and secure manner. A Motor Vehicle which is used in violation of Sound Amplification Systems, Window Obstructed Vision, Curfew Violation, Required Liability Insurance, Underage Possession of Alcoholic Liquor, Unlawful Possession of Drugs, Unlawful Possession of Weapon, Fleeing or Attempting to Elude Police Officer shall be declared a public nuisance and a threat to public safety.

**FREEPORT PARKS FOUNDATION**

The Freeport Parks Foundation is a not-for-profit organization created to provide resources beyond conventional public funding to enrich and enhance the Freeport Park District. The Foundation is fully committed to assisting the Freeport Park District reach its full potential in terms of land acquisition, facility enhancement, parks beautification, and programming. If you are interested in contributing to the Foundation or would like additional information, please call 815-801-2500.

**CITY OF FREEPORT CURFEW ORDINANCE**

**Age 16 =** 10:00 PM – 6:00 AM Sunday thru Thursday;

12:00 AM – 6:00 AM Friday and Saturday

**Age 12 – 15 =** 9:00 PM – 6:00 AM Sunday thru Thursday;

11:00 PM – 6:00 AM Friday and Saturday

**Ages 11 & under =** 8:00 PM – 6:00 AM Sunday thru Thursday;

10:00 PM – 6:00 AM Friday and Saturday

\*For a complete listing of the ordinance and exemptions, please contact the City of Freeport Police Department or see online at [http://www.amlegal.com/freeport\\_il/](http://www.amlegal.com/freeport_il/).



## Bunny Trail

Here comes Peter Cotton Tail, hopping down the bunny trail. Join the Bunny in Krape Park for an Eggstravagant event! Be sure to bring your Spring Basket as there will be many great opportunities to fill it up with goodies and eggs. This Eggciting event puts a fun spin on the typical egg hunt. Plus, there is a chance that the Easter Bunny may be stopping by to visit with all the kids in the park.

**Saturday, March 26**

11:00 AM-12:30 PM

Krape Park (Trail begins at the carousel)

## PRETZEL CITY 5K

**Saturday, June 25, 2016**

**Krape Park**

Race starts at 8:00 AM

This is a great event whether you are a novice runner looking to run your first 5k, or a seasoned competitor looking to beat your personal best time. Runners and walkers of all abilities are welcome to participate. The course consists of flat roadways and paths that wind through picturesque Krape Park. The race is also part of the Rockford Road Runners circuit. All pre-registered participants will receive an event T-shirt.

### Registration

\$25 for Pre-registrations by June 22nd

\$10 for kids 19 & under

For more information or to register online, visit

**[www.freeportparkdistrict.org](http://www.freeportparkdistrict.org)**.

\$30 for race day registrations

*(t-shirt not guaranteed)*

Race day registration from 7:00 – 7:30 AM

**Location: Krape Park Gunkel Shelter**

## AUTUMN LEAF RUN

**October 8, 2016**

**Oakdale Nature Preserve**

Race starts at 9:00 AM

The Autumn Leaf Run is a trail run/hike that takes place at Oakdale Nature Preserve. The event takes place on Saturday, October 8, 2016 and is open to runners, walkers or nature enthusiasts interested in spending some time outdoors supporting a great cause. All proceeds from the Autumn Leaf Run will go to the Freeport Parks Foundation to fund tree replacement in Freeport Parks. An estimated 500 trees need to be planted to replace those damaged by the Emerald Ash Borer that has plagued trees in the region. We appreciate your support to keep our community green and vibrant. The race course consists of a 5K trail run through the varied terrain of Oakdale Nature Preserve. Runners and hikers will encounter wide tree-lined trails, moderate hills, prairie, bridge crossings and a few single track trail sections. The start and finish lines will be near each other. The race will be timed using a chip timing system.

### Registration

\$25 for pre-registration by October 3rd

For more information or to register online, visit

**[www.freeportparkdistrict.org](http://www.freeportparkdistrict.org)**

\$35 for race day entry *(t-shirt not guaranteed)*

Race day registration from 7:00 – 8:30 AM



## MOVIES IN THE PARK

Join the Freeport Park District and FHN for the annual Movie in the Park Series. Movies will begin at approximately 8:30 PM depending on day light. Prior to the movie, there will be activities and entertainment beginning at 7:00 PM. Movie titles will be announced at a later date.

**Friday, June 24th at Read Park**  
**Friday, August 12th at Krape Park**

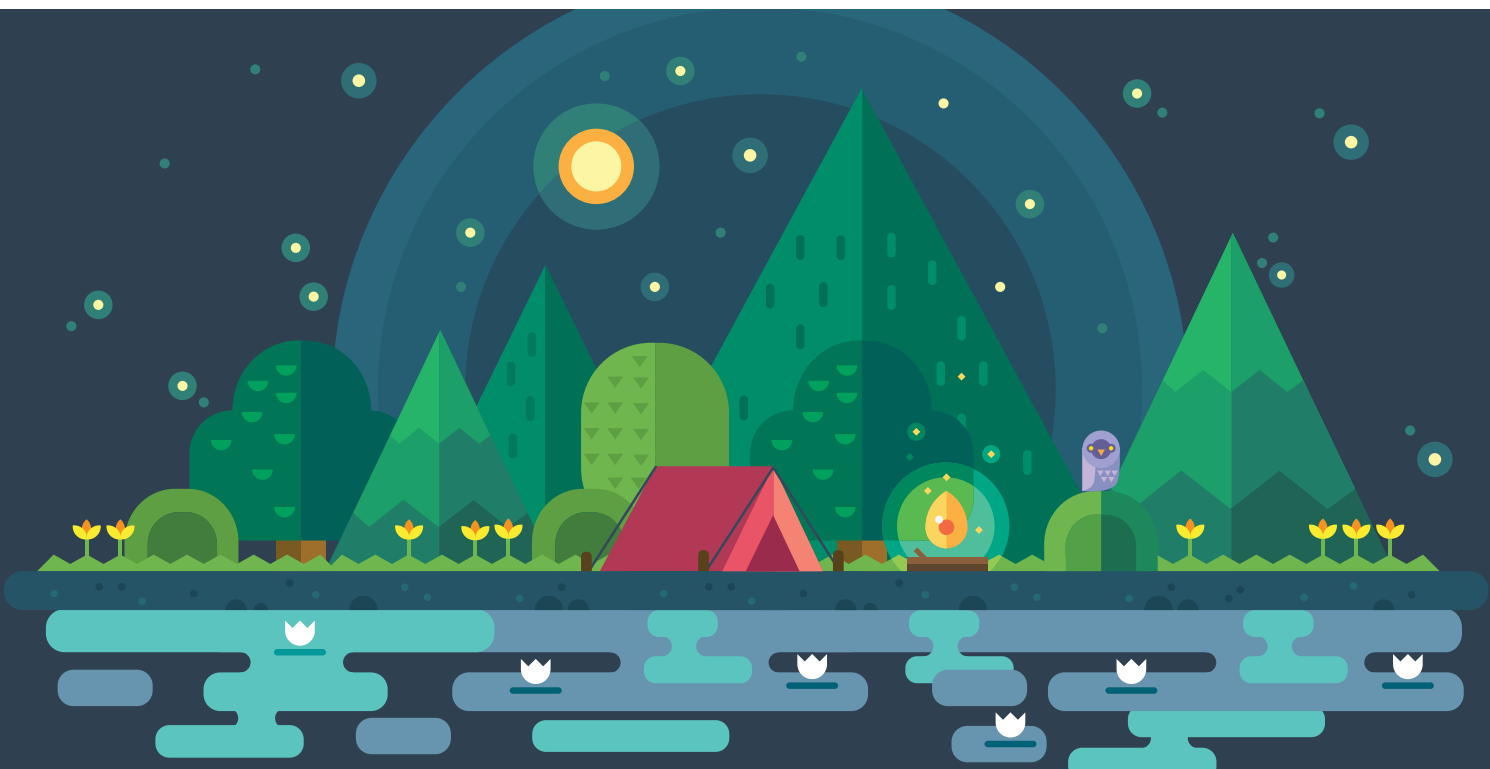


## FREEPORT CONCERT BAND

Koenig Amphitheater in Krape Park  
 Concerts begin at 7:30 PM  
 Sunday evenings, June 19 – July 24

## FREEPORT CHORALE SOCIETY

Koenig Amphitheater in Krape Park  
 Performance begins at 7:00 PM  
 Sunday, August 7



## FAMILY CAMP OUT IN KRAPE PARK

Spend a night in Krape Park with your family. Fun activities like mini golf, scavenger hunt, and canoeing start the night off and gradually end with s'mores around the camp fire. Sign up as a family or as a group of friends. Each group must have an adult present and provide their own tent. Check-in will begin at 5:00 on Friday evening. Camp sites must be cleaned up and vacated by 9:00 Saturday morning. Each site reservation includes 1 boat rental and 4 mini golf passes. Pre-registration is required at the Park District Office. **Location: Koenig Theater**

Age	Day	Time	Date	Register By	R/NR Fee	Code #
Adult	F, Sa	5:00P-09:00A	7/15-7/16	7/8	\$35/40	206021-01



## NAVY PIER BUS TRIP

Take a day trip to Chicago's Navy Pier... Take a ride on the 15-story tall Ferris wheel, catch a movie at the IMAX® Theatre, play at the Chicago Children's Museum, rent a bike and ride along the lakefront, dine and shop at the many establishments nearby, or enjoy other features this area has to offer. Navy Pier will also be hosting Tall Ships tour this weekend that includes sailing vessels from around the world. This trip includes round trip travel by Charter Bus to Chicago and back to Freeport. All additional activities are at the cost of the participant.

Age	Day	Time	Date	Register By	R/NR Fee	Code #
Adult	Sa	8:00A-08:00P	7/30	7/8	\$28/30	210013-02

## GOLD COAST ART FAIR BUS TRIP - GRANT PARK CHICAGO

Come enjoy the summer sun in Chicago for an art-filled experience at the Gold Coast Art Fair at Grant Park. Enjoy outstanding artwork, live music, and good food. Art not your forte? Take advantage of the relaxing, roundtrip to Chicago and spend your day enjoying other attractions such as the museums, the beach, or sight seeing! The registration fee below includes round trip transportation. A \$5 donation is suggested for admission into the Art Fair. All children must be accompanied by a parent or legal guardian.

Age	Day	Time	Date
Adult	Sa	8:00A-08:00P	6/18
Register By	R/NR Fee	Code #	
6/3	\$28/30	210011-01	



## CHICAGO CUBS TRIPS

Come watch the Cubs take on Division rivals at these premier games at Wrigley Field. All bus trips will depart from the Park District Office in Read Park on deluxe charter buses. Payment is due at time of registration. All children must be accompanied by a parent or legal guardian.

Opponent	Day	Time	Date
Pirates	Sa	3:30P-12:00A	6/18
Game Time	Register By	R/NR Fee	Code #
7:15P	6/10	\$70/75	210012-01

Opponent	Day	Time	Date
Cardinals	Sa	8:00A-10:00P	9/24
Game Time	Register By	R/NR Fee	Code #
TBD	9/16	\$70/75	210012-02



# Art in the Park

Join the Freeport Park District and the Freeport Art Museum as we welcome back the 9th annual, award winning, Art in the Park. Come out to Krape Park and enjoy the sights and sounds at this FREE community event. Cruise the walks and view the fine art on display by local and regional artists. Purchase a wonderful new piece of artwork to take home with you! Listen as local performing artists take the stage throughout the day. Partake in creative hands-on activities with the kids. Don't miss out on this thrilling event!

For information on presenting as an artist, please call the Freeport Park District. Artist applications will be accepted until June 29th. Visit [facebook.com/artintheparkfreeport](https://www.facebook.com/artintheparkfreeport) for more information.

## Krape Park

Sunday, September 4  
10:00 AM – 5:00 PM





### SWIM LESSONS - LEVEL 1

Introduction to Water Skills - Participants will learn to enter and exit water safely, float on front and back, submerge underwater, exhale underwater, explore swimming on front and back, follow basic water safety rules, and submerge to pick up objects underwater. **Location: Read Park Family Aquatic Center**

Age	Day	Time	Date	Register By	R/NR Fee	Code #
5-16	M-F	10:00-10:45A	6/13-6/24	6/8	\$42/46	207011-02
5-16	M-F	5:15-6:00P	6/13-6/24	6/8	\$42/46	207011-03
5-16	M-F	9:00-9:45A	7/5-7/18	6/29	\$42/46	207011-04
5-16	M-F	10:00-10:45A	7/5-7/18	6/29	\$42/46	207011-05
5-16	M-F	5:15-6:00P	7/5-7/18	6/29	\$42/46	207011-06
5-16	M-F	10:00-10:45A	7/25-8/5	7/20	\$42/46	207011-08
5-16	M-F	5:15-6:00P	7/25-8/5	7/20	\$42/46	207011-09

### SWIM LESSONS - LEVEL 2

Fundamental Aquatic Skills - Participants will build on skills learned in Level 1 and learn to tread water, explore swimming on side, perform rhythmic breathing, glide on front and back, rollover front to back, and swim on front and back using combined strokes. **Location: Read Park Family Aquatic Center**

Age	Day	Time	Date	Register By	R/NR Fee	Code #
5-16	M-F	10:00-10:45A	6/13-6/24	6/8	\$42/46	207012-02
5-16	M-F	5:15-6:00P	6/13-6/24	6/8	\$42/46	207012-03
5-16	M-F	9:00-9:45A	7/5-7/18	6/29	\$42/46	207012-04
5-16	M-F	10:00-10:45A	7/5-7/18	6/29	\$42/46	207012-05
5-16	M-F	5:15-6:00P	7/5-7/18	6/29	\$42/46	207012-06
5-16	M-F	10:00-10:45A	7/25-8/5	7/20	\$42/46	207012-08
5-16	M-F	5:15-6:00P	7/25-8/5	7/20	\$42/46	207012-09

### SWIM LESSONS - LEVEL 3

Stroke Development - Participants will build on skills learned in Level 2 and learn to jump into deep water, dive from sitting or kneeling position, bob with head fully submerged, perform rotary breathing, survival float, swim front crawl, swim back crawl, perform butterfly kick and body motion, perform HELP and huddle positions, perform reaching assists, and use Check-Call-Care in case of an emergency. **Location: Read Park Family Aquatic Center**

Age	Day	Time	Date	Register By	R/NR Fee	Code #
5-16	M-F	10:00-10:45A	6/13-6/24	6/8	\$42/46	207013-02
5-16	M-F	5:15-6:00P	6/13-6/24	6/8	\$42/46	207013-03
5-16	M-F	9:00-9:45A	7/5-7/18	6/29	\$42/46	207013-04
5-16	M-F	10:00-10:45A	7/5-7/18	6/29	\$42/46	207013-05
5-16	M-F	5:15-6:00P	7/5-7/18	6/29	\$42/46	207013-06
5-16	M-F	10:00-10:45A	7/25-8/5	7/20	\$42/46	207013-08
5-16	M-F	5:15-6:00P	7/25-8/5	7/20	\$42/46	207013-09







### SWIM LESSONS - LEVEL 4

Stroke Improvement - Participants will build upon skills learned in Level 3 and learn to dive from compact or stride position, swim underwater, perform feet-first surface dive, coordinate butterfly, swim breaststroke, swim elementary backstroke, swim on side using scissors kick, perform open turns on front and back, tread water using sculling arm motions and kick, use safe diving rules, and perform throwing assists. **Location: Read Park Family Aquatic Center**

Age	Day	Time	Date	Register By	R/NR Fee	Code #
5-16	M-F	10:00-10:45A	6/13-6/24	6/8	\$42/46	207014-02
5-16	M-F	5:15-6:00P	6/13-6/24	6/8	\$42/46	207014-03
5-16	M-F	9:00-9:45A	7/5-7/18	6/29	\$42/46	207014-04
5-16	M-F	10:00-10:45A	7/5-7/18	6/29	\$42/46	207014-05
5-16	M-F	5:15-6:00P	7/5-7/18	6/29	\$42/46	207014-06
5-16	M-F	10:00-10:45A	7/25-8/5	7/20	\$42/46	207014-08
5-16	M-F	5:15-6:00P	7/25-8/5	7/20	\$42/46	207014-09

### SWIM LESSONS - LEVEL 5

Stroke Refinement - Participants will build upon skills learned in Level 4 and further refine the Front Crawl, Back Crawl, Sidestroke, Breaststroke, Butterfly, Elementary Backstroke, and Sidestroke. Participants will also learn to shallow dive and begin swimming, tread water with two different kicks, survival swimming, tuck and pike surface dives, front flip turn, backstroke flip turn, and rescue breathing. **Location: Read Park Family Aquatic Center**

Age	Day	Time	Date	Register By	R/NR Fee	Code #
5-16	M-F	10:00-10:45A	6/13-6/24	6/8	\$42/46	207015-01
5-16	M-F	5:15-6:00P	6/13-6/24	6/8	\$42/46	207015-02
5-16	M-F	9:00-9:45A	7/5-7/18	6/29	\$42/46	207015-03
5-16	M-F	10:00-10:45A	7/5-7/18	6/29	\$42/46	207015-04
5-16	M-F	5:15-6:00P	7/5-7/18	6/29	\$42/46	207015-05
5-16	M-F	10:00-10:45A	7/25-8/5	7/20	\$42/46	207015-06
5-16	M-F	5:15-6:00P	7/25-8/5	7/20	\$42/46	207015-07

### SWIM LESSONS - LEVEL 6

Swimming and Skill Proficiency - Participants will further refine all six strokes so students swim them with ease, efficiency, power and smoothness over greater distances. **Location: Read Park Family Aquatic Center**

Age	Day	Time	Date	Register By	R/NR Fee	Code #
5-16	M-F	10:00-10:45A	6/13-6/24	6/8	\$42/46	207016-01
5-16	M-F	5:15-6:00P	6/13-6/24	6/8	\$42/46	207016-02
5-16	M-F	9:00-9:45A	7/5-7/18	6/29	\$42/46	207016-03
5-16	M-F	10:00-10:45A	7/5-7/18	6/29	\$42/46	207016-04
5-16	M-F	5:15-6:00P	7/5-7/18	6/29	\$42/46	207016-05
5-16	M-F	10:00-10:45A	7/25-8/5	7/20	\$42/46	207016-06
5-16	M-F	5:15-6:00P	7/25-8/5	7/20	\$42/46	207016-07



### LITTLE FINS

This program is designed for the soon-to-be swimmer who is ready to explore the water without parent, but not ready to participate in level 1 swim lessons. Classes will be kept to a minimum 1 to 3 instructor/participant ratio.

**Location: Read Park Family Aquatic Center**

Age	Day	Time	Date	Register By	R/NR Fee	Code #
3-4	M-F	10:00-10:45A	6/13-6/24	6/8	\$52/56	207041-01
3-4	M-F	5:15-6:00P	6/13-6/24	6/8	\$52/56	207041-02
3-4	M-F	9:00-9:45A	7/5-7/18	6/29	\$52/56	207041-03
3-4	M-F	10:00-10:45A	7/5-7/18	6/29	\$52/56	207041-04
3-4	M-F	5:15-6:00P	7/5-7/18	6/29	\$52/56	207041-05
3-4	M-F	10:00-10:45A	7/25-8/5	7/20	\$52/56	207041-06
3-4	M-F	5:15-6:00P	7/25-8/5	7/20	\$52/56	207041-07

### PARENT-TOT SWIM LESSONS

Designed for parents and tots ages 4 and under. This class will introduce your child to the pool in an interactive and fun atmosphere. Parent is required to be in water with child at all times. **Location: Read Park Family Aquatic Center**

Age	Day	Time	Date	Register By	R/NR Fee	Code #
P/T	M-F	10:00-10:45A	6/13-6/24	6/8	\$42/46	207017-01
P/T	M-F	5:15-6:00P	6/13-6/24	6/8	\$42/46	207017-02
P/T	M-F	9:00-9:45A	7/5-7/18	6/29	\$42/46	207017-03
P/T	M-F	10:00-10:45A	7/5-7/18	6/29	\$42/46	207017-04
P/T	M-F	5:15-6:00P	7/5-7/18	6/29	\$42/46	207017-05
P/T	M-F	10:00-10:45A	7/25-8/5	7/20	\$42/46	207017-06
P/T	M-F	5:15-6:00P	7/25-8/5	7/20	\$42/46	207017-07

### BEGINNING DIVING LESSONS

For good swimmers who are comfortable in deep water. This two-week course develops strength, flexibility and confidence while learning basic dives off a one-meter springboard. Emphasis is placed on safe diving. **Location: Read Park Family Aquatic Center**

Age	Day	Time	Date	Register By	R/NR Fee	Code #
8-16	M-F	9:00-9:45A	6/13-6/24	6/8	\$42/46	207019-01
8-16	M-F	9:00-9:45A	7/25-8/5	7/20	\$42/46	207019-02





### ADULT SWIM LESSONS

Designed for the non-swimmer, you will be introduced to water safety, survival float, front crawl skills and other basic strokes. **Location: Read Park Family Aquatic Center**

Age	Day	Time	Date	Register By	R/NR Fee	Code #
Adult	Sa	9:30-10:30A	6/11-7/2	6/8	\$30/35	207021-01
Adult	Sa	9:30-10:30A	7/16-8/6	7/13	\$30/35	207021-02

### AQUACIZE

Enjoy a low-impact workout at the Read Park Aquatic Center this summer. **Location: Read Park Family Aquatic Center**

Age	Day	Time	Date	Register By	R/NR Fee	Code #
Adult	M-F	9:00-9:50A	6/13-6/24	6/8	\$40/45	207031-01
Adult	M-F	9:00-9:50A	7/25-8/5	7/20	\$40/45	207031-02
Adult	Sa	10:00-10:50A	6/11-7/2	6/8	\$20/23	207031-03
Adult	Sa	10:00-10:50A	7/16-8/6	7/13	\$20/23	207031-04

### LIFEGUARD CERTIFICATION

The purpose of the American Red Cross Lifeguarding course is to provide entry-level lifeguard participants with the knowledge and skills to prevent, recognize and respond to aquatic emergencies and to provide care for breathing and cardiac emergencies, injuries and sudden illnesses until emergency medical services (EMS) personnel take over. Participants must be 15 years old and be able to pass the prerequisite swim test - consisting of a 300 yard swim, a timed brick retrieval, and 2 minutes of treading water. Class dates & times - Friday, May 20 from 5 to 9pm; Saturday, May 21 from 8am to 5pm; and Sunday, May 22 from 8am to 5pm. **Location: Read Park Family Aquatic Center**

Age	Day	Time	Date	Register By	Fee	Code #
15+	F-Su	TBA	5/20-5/22	5/2	\$125	207051-01



**YOUTH ART**

Freeport Park District and Freeport Art Museum bring you this series of creative new classes for young artists.

**CAROUSEL HORSES**

The historic carousel is the inspiration for this class, using a full palette of brilliant color to create dynamic paintings of horses. **Location: Krape Community Building**

Age	Day	Time	Date	Register By	R/NR Fee	Code #
7-12	W	3:00-5:00P	6/15	6/8	\$20/25	201091-01

**MAKING MUSIC**

Make those recyclables sing! Create musical sounds with instruments fashioned from recycled materials. **Location: Krape Community Building**

Age	Day	Time	Date	Register By	R/NR Fee	Code #
7-12	W	3:00-5:00P	7/13	7/6	\$20/25	201091-02

**YOUTH SOCCER INSTRUCTION**

This is a non-competitive introduction to soccer. Instructions include offense and defense with emphasis on positions, dribbling, passing, scoring, sportsmanship, and teamwork. Weather related cancellations will be made up on Fridays or week after regular scheduled meetings. Weather updates available on sports hotline 815-235-6114 x 7

**Location: Read Park Multi-purpose Field**

Age	Day	Time	Date	Register By	R/NR Fee	Code #
4-5	M,W	5:30-6:30P	6/6-6/29	5/27	\$50/55	202011-01
6-7	M,W	6:30-7:30P	6/6-6/29	5/27	\$50/55	202011-02

**T-BALL**

T-ball is Freeport Park District's most popular instructional program. The 4-week program will focus on basic fundamentals of T-ball. The participants will learn hitting, fielding, throwing, sportsmanship, and teamwork. Weather related cancellations will be made up on Fridays. Weather update available on the sports hot line 815-235-6114 x 7

**Location: Southeast Ball Field**

Age	Day	Time	Date	Register By	R/NR Fee	Code #
4-6	M,W	5:30-6:30P	7/11-8/3	7/1	\$50/55	202021-01
4-6	M,W	6:30-7:30P	7/11-8/3	7/1	\$50/55	202021-02





### YOUTH TENNIS LESSONS

This class provides a solid foundation to maximize skill improvement and enjoyment. Instruction includes hand-eye-coordination, racket skills, stroke production, with emphasis on ground strokes, serves, returns, and volleys. Court position, scoring, and singles and doubles are introduced. Weather related cancellations will be made up at the end of regular scheduled class. Weather update available on the sports hot line 815-235-6114 x 7 **Location: Read Park Tennis Courts**

Age	Day	Time	Date	Register By	R/NR Fee	Code #
4-10	Tu,Th	5:30-6:30P	6/7-6/30	5/27	\$50/55	202031-01
4-10	Tu,Th	5:30-6:30P	7/12-8/4	7/1	\$50/55	202031-02

### SPORTS SAMPLER

This exciting instructional class will introduce your child to the wide world of sports. A different sport will be introduced every class. Basketball, soccer, t-ball, tennis, football, volleyball, golf and Tae Kwon Do will be played. Basic rules and instruction will be taught. Weather related cancellations will be made up at the end of the regularly scheduled class time. Weather updates available on the sports hotline 815-235-6114 ext 7. Ask for schedule at time of registration. **Location: TBA**

Age	Day	Time	Date	Register By	R/NR Fee	Code #
4-7	Tu,Th	5:30-6:30P	6/7-6/30	5/27	\$50/55	202051-01
4-7	Tu,Th	5:30-6:30P	7/12-8/4	7/1	\$50/55	202051-02



### EARTH MONTH 2016

All across Northwest Illinois groups and organizations that care about our planet and our community are celebrating “Earth Month 2016” by cooperating and organizing a variety of special family and kid-friendly programs and activities. The Freeport Public Library, the Freeport Art Museum, and the Northwest Illinois Audubon Society are three of these organizations offering special classes, activities, a film festival, nature and bird watching hikes.

Check the following websites for the latest, up-to-the-minute ‘Earth Month 2016’ information.

- Freeport Park District..... [www.freeportparkdistrict.org](http://www.freeportparkdistrict.org)
- Freeport Art Museum..... [www.freeportartmuseum.org](http://www.freeportartmuseum.org)
- Freeport Public Library ..... [www.freeportpubliclibrary.org](http://www.freeportpubliclibrary.org)
- Northwest Illinois Audubon Society ..... [www.nwilaudubon.org](http://www.nwilaudubon.org)



The Freeport Park District does not require you to purchase any additional equipment to participate in all martial art classes. However, if you would like to move up in rank/belt system additional equipment, uniform, and testing fees may apply via your instructor. Participation in competitions outside of the class will also result in additional registration and equipment fees.

**LITTLE NINJAS**

Join Master Sung Sop An and his black belt staff for their Little Ninjas class. This program is designed specifically to help teach 3 to 8 year olds the important qualities of respect, self-control and confidence, this class will also help with motor skills and coordination. **Location: Read Park Pavilion**

Age	Day	Time	Date	Register By	R/NR Fee	Code #
3-8	Th	5:45-6:15P	4/28-6/16	4/22	\$60/65	214031-01
3-8	Th	5:45-6:15P	6/23-8/11	6/17	\$60/65	214031-02
3-8	Th	5:45-6:15P	8/18-10/6	8/12	\$60/65	214031-03

**TAE KWON DO**

Tae Kwon Do teaches children to respect themselves and others. The program can help build a child’s self-esteem. Master Sung Sop An and his black belt staff from the Rockford Academy instruct the class. Many independent studies have shown that students that participate in martial arts programs achieve better grades and perform better in school. The Rockford Academy is World Tae Kwon Do Federation Licensed, which means that each students belt level will be recognized anywhere in the world. **Location: Read Park Pavilion**

Age	Day	Time	Date	Register By	R/NR Fee	Code #
9+	Th	6:15-7:00P	4/28-6/16	4/22	\$60/65	214041-01
9+	Th	6:15-7:00P	6/23-8/11	6/17	\$60/65	214041-02
9+	Th	6:15-7:00P	8/18-10/6	8/12	\$60/65	214041-03





## MEN'S SOFTBALL LEAGUE

Summer Softball League will be played from May to August. All scheduling and updates will be on [www.quickscores.com/freeport](http://www.quickscores.com/freeport). There will be a link through the park district's website. \*Each League will be 10 games with double elimination tournament at the end of the season. Weather related cancellations will be made up at the end of the regular schedule. Weather updates available on the sports hot line 815-235-6114 x 7. **Location: Taylor Park Ball Fields**

Age	Day	Time	Date	Register By	Team Fee	Code #
Adult	M	5:00-10:30P	5/9-8/29*	4/29	\$400	204061-01
Adult	M	5:00-10:30P	5/9-8/29*	4/29	\$400	204061-02
Adult	W	5:00-10:30P	5/11-8/31	4/29	\$400	204061-03
Adult	F	5:00-10:30P	5/13-9/2	4/29	\$400	204061-04

\*No Games 5/30 & 7/4

## WOMEN'S SOFTBALL LEAGUE

Summer Softball League will be played from May to August. All scheduling and updates will be on [www.quickscores.com/freeport](http://www.quickscores.com/freeport). There will be a link through the park district's website. \*Each League will be 10 games with double elimination tournament at the end of the season. Weather related cancellations will be made up at the end of the regular schedule. Weather updates available on the sports hot line 815-235-6114 x 7. **Location: Taylor Park Ball Fields**

Age	Day	Time	Date	Register By	Team Fee	Code #
Adult	Tu	5:00-10:30P	5/10-8/30	4/29	\$400	204071-01

## OVER 30 16" SOFTBALL LEAGUE

Over 30 16" Softball will be played May through August. All scheduling and updates will be on [www.quickscores.com](http://www.quickscores.com). Teams may have two team members on roster that are under age 30. No umpires are used in this league. Umpire will be member of batting team. Mat will be used to call balls and strikes. **Location: Read Park Ball Fields**

Age	Day	Time	Date	Register By	Team Fee	Code #
Adult	Th	6:30-8:30P	4/21-8/25	4/15	\$175	204131-01

## FOOT GOLF LEAGUE

FootGolf combines the elements of Soccer and Golf to provide a challenging fun new sport. FootGolf league will have 2 person teams competing against each other in a new format each week. Stroke, match and best ball formats will be used. **Location: Park Hills Golf Course**

Age	Day	Time	Date	Register By	Team Fee	Code #
Adult	Th	5:30-7:30P	6/9-7/14	5/6	\$60	204141-01



## TAI CHI

Tai Chi Chuan is a gentle form of exercise and relaxation. Tai Chi can help balance stress, physical aches and pains and keep your system strong. Researchers have found that long-term Tai Chi practice shows some favorable effects on the promotion of balance control flexibility and cardiovascular fitness and reduced the risk of falls in elderly patients. Please wear loose fitting clothing and tennis shoes and bring plenty of water. **Location: Krape Community Building**

Age	Day	Time	Date	Register By	R/NR Fee	Code #
Adult	M	6:30-7:45P	5/2-6/27*	4/29	\$40/45	203021-01
Adult	Tu	9:00-10:15A	5/3-6/21	4/29	\$40/45	203021-02
Adult	Th	9:00-10:15A	5/5-6/23	4/29	\$40/45	203021-03
Adult	M	6:30-7:45P	7/11-8/29	6/30	\$40/45	203021-04
Adult	Tu	9:00-10:15A	6/28-8/16	6/24	\$40/45	203021-05
Adult	Th	9:00-10:15A	6/30-8/18	6/24	\$40/45	203021-06
Adult	M	6:30-7:45P	9/12-10/31	9/9	\$40/45	203021-07
Adult	Tu	9:00-10:15A	8/23-10/11	8/19	\$40/45	203021-08
Adult	Th	9:00-10:15A	8/25-10/13	8/19	\$40/45	203021-09

\*No Class 05/30

## ADULT ART CLASS

Freeport Park District and Freeport Art Museum bring you this series of creative new classes for artists.

### WATERCOLOR

Learn watercolor techniques from an experienced artist while creating a beautiful painting of flowers. Bring a vase of flowers, pictures of flowers, or simply use the ones provided.

Beginning to intermediate level. **Location: Krape Community Building**

Age	Day	Time	Date	Register By	R/NR Fee	Code #
Adult	Th	6:00-8:00P	6/9	6/2	\$20/25	203071-03

### SUMMER LANDSCAPE

Follow step by step instructions, and use acrylic paints to create a charming country landscape.

Beginning to intermediate level. **Location: Krape Community Building**

Age	Day	Time	Date	Register By	R/NR Fee	Code #
Adult	Th	6:00-8:00P	7/14	7/7	\$20/25	203071-04

### STILL LIFE

Join us and use rich values of charcoal combined with the vibrant colors of pastel to create a striking still life drawing.

Beginning to intermediate level. **Location: Krape Community Building**

Age	Day	Time	Date	Register By	R/NR Fee	Code #
Adult	Th	6:00-8:00P	8/4	7/28	\$20/25	203071-05







## STARTING OUT IN ASTRONOMY

The staff of the Doug Firebaugh Observatory is providing a six week series called Starting Out In Astronomy. Through a mixture of lectures, discussions, and hands-on activities, this course will provide a foundation for those interested in the science and hobby of astronomy and understanding the night sky. This class will meet once a week for six weeks to explore various facets of astronomy.

### Topics will include:

- Introduction to Astronomy
- Understanding the celestial sphere and finding the constellations
- Basics of using a telescope
- Understanding the phases and observing the Moon
- Observing objects in the Solar System
- Observing deep sky objects (star clusters, nebula, and galaxies)

Course materials will be provided and no previous knowledge of the subject is assumed. There is a minimum class size of 6 with a maximum of 12. This class is scheduled for six consecutive Wednesday nights and the facility is not heated so dress for the weather. **Location: Firebaugh Observatory**

Age	Day	Time	Date	Register By	R/NR Fee	Code #
Adult	W	7:00-9:00P	5/4-6/8	4/22	\$45/50	203081-01



## EARTH MONTH 2016

All across Northwest Illinois groups and organizations that care about our planet and our community are celebrating “Earth Month 2016” by cooperating and organizing a variety of special family and kid-friendly programs and activities. The Freeport Public Library, the Freeport Art Museum, and the Northwest Illinois Audubon Society are three of these organizations offering special classes, activities, a film festival, nature and bird watching hikes.

Check the following websites for the latest, up-to-the-minute ‘Earth Month 2016’ information.

Freeport Park District.....	<a href="http://www.freeportparkdistrict.org">www.freeportparkdistrict.org</a>
Freeport Art Museum.....	<a href="http://www.freeportartmuseum.org">www.freeportartmuseum.org</a>
Freeport Public Library .....	<a href="http://www.freeportpubliclibrary.org">www.freeportpubliclibrary.org</a>
Northwest Illinois Audubon Society .....	<a href="http://www.nwilaudubon.org">www.nwilaudubon.org</a>



## Northlands Association for Special Recreation (NASR)

Northlands Association for Special Recreation (NASR) is a cooperative partnership between the Rockford, Freeport and Belvidere Park Districts (referred to as member district). NASR programs are open to any individual with disability-related special needs such as physical, mental and developmental disabilities and persons with mental illness, behavior disorders, visual and hearing impairments.

Member district residents are invited to participate in specialty/therapeutic (TR) programs offered through any member district at the resident rate. For participation in Inclusion Services at a member district other than your own member district, you must pay the non-resident rate for that specific program.

### Freeport Park District

Special Recreation Department  
[www.freeportparkdistrict.org](http://www.freeportparkdistrict.org)  
 815-235-6114

### Rockford Park District

Therapeutic Recreation Department  
[www.rockfordparkdistrict.org](http://www.rockfordparkdistrict.org)  
 815-987-8800

### Belvidere Park District

Special Recreation Department  
[www.belviderepark.org](http://www.belviderepark.org)  
 815-547-5711

## BOWLING BUDDIES

Spend the afternoon bowling and maybe even make a new friend at Bowling Buddies! Perfect your game for the upcoming Special Olympics season or simply come out to have a good time. Please be sure to sign up for the age-appropriate session - individuals will be placed on lanes according to age. **Location: Freeport Lanes**

Age	Day	Time	Date	Register By	Fee	Code #
6-15	Th	4:30-5:30P	4/14-5/5	4/12	\$38	212011-01
15+	Th	4:30-5:30P	4/14-5/5	4/12	\$38	212011-02

## SNACK AND SWIM

Cool off this summer with your friends at the Read Park Family Aquatic Center. Relax in the water, go down the water slide, hang out with your friends, and splash all your worries away. End the evening with a delicious snack! **Location: Read Park Family Aquatic Center**

Age	Day	Time	Date	Register By	Fee	Code #
8+	Tu	6:00-7:30P	6/28	6/22	\$15	212021-01

## SPECIAL RECREATION DANCES

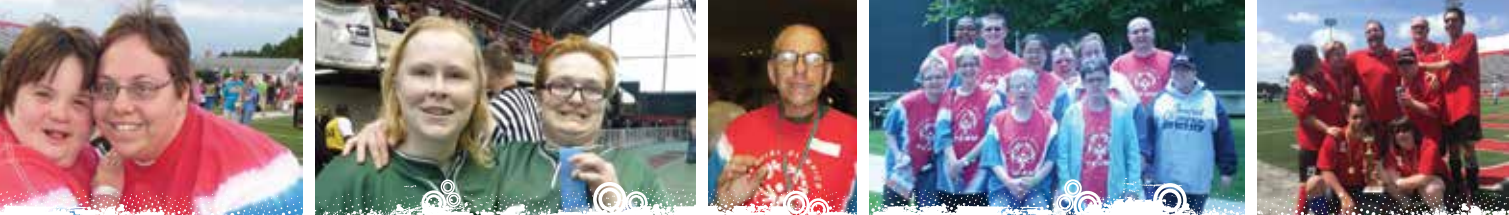
Do you love music, dancing, and socializing with friends? If so, grab your partner and come on over to the Freeport Park District Special Recreation Dances! Every month we have a themed dance full of fun and excitement. Each dance is complete with music, decorations and a light snack. Feel free to dress to the theme!

## SPRINGTIME LUAU

**Location: Carl Sandburg School**

Age	Day	Time	Date	Register By	Fee	Code #
15+	F	7:00-9:00P	4/8	4/7	\$10	212051-05





## NIGHT UNDER THE STARS

Enjoy a night under the stars at this specialty dance! Formal attire is optional at this prom-themed event. Lifetouch Photography will be on hand to take pictures, and a souvenir photo gift will be provided to every individual. Photos can also be purchased at an additional cost if desired (please bring a check made out to Lifetouch if planning on purchasing photos). A prom court will also be crowned, including the coveted king and queen awards! You don't want to miss this event! **Location: 4-Seasons Banquet**

Age	Day	Time	Date	Register By	Fee	Code #
15+	F	7:00-9:00P	5/6	5/4	\$15	212051-02

## FOOD AND A FLICK

Come hungry to this program, as we will eat at a local restaurant before taking in the latest movie. Join your friends as we watch the newest number one flick this month! Movies will not be rated higher than PG-13. Restaurant, movie titles, and exact start and end times will be given to you approximately two days prior to the program. **Location: TBD**

Age	Day	Time	Date	Register By	Fee	Code #
14+	Tu	4:00-8:30P	5/31	5/26	\$40	212131-01
14+	Tu	4:00-8:30P	7/26	7/19	\$40	212131-02

## POP AND PAINT

Want to make beautiful art to hang on your wall? Come join us in a step by step painting program to create a work of art while sipping on your favorite pop! The group will follow along with the instructor to create the art piece and take it home when finished. **Location: Oakdale Mogle Building**

Age	Day	Time	Date	Register By	Fee	Code #
8+	Tu	4:30-5:30P	6/14	6/7	\$20	212141-01

## SPECIAL OLYMPICS

**Special Olympics Team Uniforms** – All Special Olympics athletes must obtain a team uniform as required for each sport. Please note the uniform requirements included in the program description. Contact the Park District Office for order forms or to inquire about uniform purchases. Uniform fees apply and are subject to change.

## SO SOFTBALL

Get your bat and glove ready! Summer is almost here, and it's time for Special Olympics Softball! Join the team and get ready for an action packed summer. Please wear athletic shorts and shoes to all practices and games. Participation in State tournaments is not guaranteed and is dependent upon staff availability and payment of additional participation fees up to \$50. Athletes must have a current Special Olympics medical application valid through September 2016. Uniform required: Jersey, Shorts, Baseball Hat. **Location: Taylor Park Softball Fields**

Age	Day	Time	Date	Register By	Fee	Code #
8+	Th	5:00-6:00P	5/19-7/21	5/12	\$75	212231-01

## SO BOWLING

Get ready to strike it big! Join us as we practice to improve our bowling in preparation for the Special Olympics Bowling Tournament. Participants must bowl at least 12 games at practice to compete in the District tournament. Participation in State tournaments is not guaranteed and is dependent upon staff availability and payment of additional participation fees up to \$50. Participants must have a current Special Olympics Medical Application on file through December 2016. Uniform Required: Shorts, T-shirt. **Location: Freepoint Lanes**

Age	Day	Time	Date	Register By	Fee	Code #
8+	M	4:30-5:30P	6/13-08/15*	6/6	\$88	212241-01

\*No Class 07/04

Special Recreation continued on next page



## SO VOLLEYBALL

Bump, Set, Spike! The volleyball teams are gearing up for a great season, and they want you to join them. Participation in State tournaments is not guaranteed and is dependent upon staff availability and payment of additional participation fees up to \$50. Athletes must have a current SO Medical Application on file through October 2016 in order to participate. Uniform required: Jersey, Shorts. **Location: Park Hill Church Gym**

Age	Day	Time	Date	Register By	Fee	Code #
8+	W	4:30-5:30P	7/20-9/14	7/13	\$55	212251-01

## NASR BOWLING TOURNAMENT

Strike it big at NASR's 5th Annual Bowling Tournament! Bowlers will compete in 2 games and be placed on lanes based on bowling average and age. If you are not a regular bowler, please indicate level of ability when registering. Please let us know if you will utilize a ramp to bowl. A taco bar lunch, awards, door prizes, bowling, shoes, and tons of fun are included in the fee. Transportation will NOT be provided to this event. **Location: Cherry Bowl**

Age	Day	Time	Date	Register By	Fee	Code #
8+	Sa	9:00-1:00P	7/16	7/1	\$15	212341-01

## CUPCAKE DECORATING

Celebrate summer with dessert! Come decorate summer themed cupcakes and desserts and end up with some sweet treats to eat or take home. All dessert and decorating supplies included. **Location: Oakdale Mogle Building**

Age	Day	Time	Date	Register By	Fee	Code #
8+	Tu	4:30-5:30P	7/19	7/12	\$20	212451-01

## TR'S GOT TALENT

Calling all dancers, actors, singers, magicians, jugglers, joke-tellers - the possibilities are endless! If you've got a talent, this program is for you! Participate in TR's Got Talent Show for prizes, awards, and a chance to be a star! There will be refreshments and tons of talent. Judges will vote for their favorite acts to determine who will be this year's most talented star. NOTE: The event is free, but a \$1 donation per person is expected. Transportation is NOT provided. There will be a dress rehearsal-date TBD. **Location: Rockford Art Museum**

Age	Day	Time	Date	Register By	Fee	Code #
ALL	Fri,Sa	6:00-9:00P	4/30	4/22	Free	212461-01

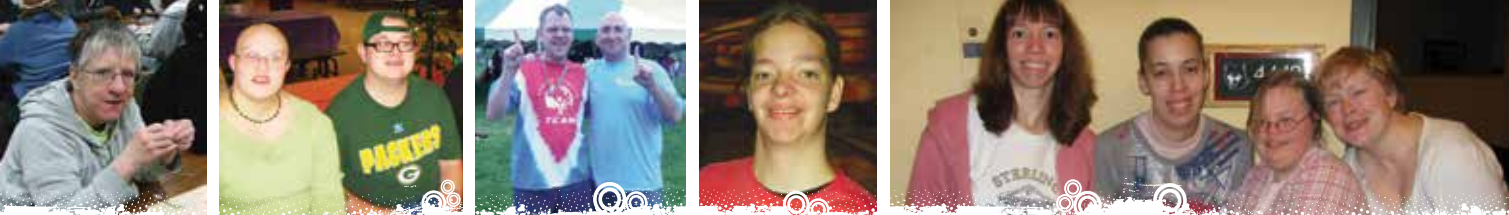
## SUNSHINE THROUGH GOLF

FORE! Sunshine Through Golf will teach you the basics of golf. Jeff Hartmann, Park Hills Golf Pro, will teach you how to properly tee off, swing your club, chip, putt, and many other fundamentals of the game. All participants will receive a gift from the Sunshine through Golf Foundation upon completion of the 6-week workshop. Celebrate your accomplishments with a party the last week. Best of all, the program is free! Program space is limited to the first ten registrants.

**Location: Park Hills Golf Course**

Age	Day	Time	Date	Register By	Fee	Code #
15+	Tu	4:30-5:15P	8/2-9/6	7/29	Free	212471-01





## MEMORIAL DAY PARADE

Gather together with teammates, coaches, and volunteers to be a part of the Memorial Day Parade again this year. The parade begins at 10 am. Be there at 9:15am if you want to help decorate the float, otherwise arrive no later than 9:45am. Meet at the Spring and Walnut St. area, near the Farm Bureau building. If it is raining, we will not participate. Wear your Freedom Jersey, and don't forget your medals! Individuals may walk and hand out candy or ride on the float waving their flags. We look forward to celebrating with you! All individuals must register.

Age	Day	Time	Date	Register By	Fee	Code #
8+	M	9:15-11:15A	5/30	5/23	\$7	212531-01

## ART WITH THE PROS

This series of unique art classes is brought to you by the Freeport Park District and Freeport Art Museum.

### PAINTING TO MUSIC

People respond to music in many different ways. Many artists paint to music! Use color, line and shape to give form to music. **Location: Krape Community Building**

Age	Day	Time	Date	Register By	Fee	Code #
8+	Tu	5:00-7:00P	8/2	7/27	\$20	212561-01

### TWO PART CLAY POTS

Come join us and use coils to make a clay bowl. It is a fun way to create unusual designs and patterns. The first session we will build the bowl and the second we will add color glaze. **Location: Freeport Art Museum**

Age	Day	Time	Date	Register By	Fee	Code #
8+	Tu	5:00-7:00P	5/24-6/7*	5/17	\$35	212561-02

\*No Class 05/31

## BOULDERS CLIMBING GYM

Come rock climb with us! Spend the day climbing with us at Boulder's Climbing Gym in Madison, WI. No experience needed! Boulder's well trained staff will teach beginners to climb in as little as 10 minutes. Transportation will be provided. Please pack a lunch and wear athletic clothes and tennis shoes. **Location: Boulders Climbing Gym**

Age	Day	Time	Date	Register By	Fee	Code #
15+	M	1:00-6:00P	5/23	5/9	\$50	212591-01

## MASTER GARDENERS

April showers bring May flowers. Come out and enjoy the sun and get your hands dirty. Learn about different plants and gardening with the Freeport High School gardening crew. Then plant beautiful plants in your own pot and watch them grow! **Location: FSD Garden Plots**

Age	Day	Time	Date	Register By	Fee	Code #
8+	Tu	4:00-5:00P	5/17	5/13	\$20	212611-01

## REGISTRATION FOR ALL PARK DISTRICT PROGRAMS IS HANDLED ON A FIRST-COME, FIRST-SERVED BASIS. IMPORTANCE OF REGISTERING EARLY

Please note that each Freeport Park District program has a registration deadline that is listed in the program description. Registration deadlines are created to allow time for staff to determine if minimum enrollment is met, create schedules, order supplies and equipment, form rosters and organize other resources to ensure a successful program. Registration may not be accepted after the published registration deadline. Many Freeport Park District programs have a maximum capacity and fill up quickly. It is strongly encouraged to register early to guarantee enrollment in a program.

## PROGRAM CANCELLATIONS

The Freeport Park District reserves the right to cancel, postpone or combine classes.

## PROGRAM REFUND POLICY

Refunds for classes and events will be given if requested two weeks or more prior to the program start time (minus a \$5 service charge). If a refund request is made within two weeks (14 days) of the start of the class or program, only a partial reimbursement (less a \$5 service charge and direct program expenses) will be issued. Refunds for bus trips (minus a \$5 service charge) will be issued only for a documented medical emergency or if arrangements are made for someone to fill the opening. Cash refunds will not be issued once the class/program has begun. A Program Refund Request Form must be completed and submitted to the Park District Office before a refund will be issued.

## INCLUSION

The Freeport Park District provides year-round opportunities for individuals with disabilities to participate with their peers without disabilities in recreational programs. Inclusion opportunities are available to individuals of all ability levels and ages. If you or a family member would like to enroll in a Park District program and need assistance, simply request additional services at the time you register. The request will be reviewed and the appropriate assistance determined. The Therapeutic and Community Recreation Supervisor will monitor progress throughout the program by staying in direct contact with the individual or caregiver. The sooner we have the information about your request, the better chances are for a successful inclusion experience. Please provide at least two weeks notice prior to the start of the program date for an inclusion request. For more information on Inclusion Services please contact us at 815-235-6114 or [contact@freeportparkdistrict.org](mailto:contact@freeportparkdistrict.org).

## NEED TRANSPORTATION?

The Freeport Park District does not provide transportation to and from programs, but we are happy to announce the Pretzel City Transit. The Pretzel City Transit currently provides transportation 6:00 a.m. through midnight Monday through Friday and 6:00 a.m. through 1:00 p.m. on Saturdays. All rides provided by Pretzel City Transit are demand response rides. In other words, there is no fixed route. Those needing a ride call dispatch at 815-233-RIDE the day before to schedule a pick-up.

## BEHAVIOR POLICY

All participants attending Freeport Park District activities or using Freeport Park District facilities are expected to exhibit appropriate behavior at all times. The following guidelines have been created in order to maintain a safe, enjoyable environment for all participants. Additional rules and guidelines may vary for specific programs as deemed necessary by staff.

## ALL PARTICIPANTS/PATRONS WILL:

- Show respect to all participants, staff, and volunteers.
- Follow program rules and take direction from recreation staff.
- Refrain from using abusive or foul language.
- Refrain from threatening or causing bodily harm to self or others.
- Show respect for property, including equipment, supplies, and facilities.
- Not be in possession of weapons

## IF INAPPROPRIATE BEHAVIOR DOES OCCUR, RECREATION STAFF WILL ATTEMPT TO RESOLVE THE PROBLEM USING THE FOLLOWING CONDUCT MODEL:

- First offense – verbal warning.
- Second offense – time-out of activity and discussion with supervisor.
- Third offense – suspension of activity/facility privileges, removal from activity/facility for remainder of the day.

*If a participant continues to refuse following directions of recreation staff or if the incident is an emergency, Police will be called and the participant may face further disciplinary action. The Park District reserves the right to dismiss a participant whose behavior endangers his or her own safety or the safety of others.*

**Read Park Family Aquatic Center**  
**867 W. American Street**  
**815-801-SWIM**

Cool off this summer at the Read Park Family Aquatic Center, which features a 40-ft. water slide, water play features, zero-depth entry and more. The season is set to open Saturday, May 28, 2016. Actual hours of operation are subject to weather. 2016 season passes are on sale at the Park District Office on Monday through Friday from 8:00am to 5:00pm. Purchase your pass prior to May 1 and receive two complimentary daily admission passes that you can use for guests!

**2016 Season Pass Rates**

	<b>Resident</b>	<b>Non-Resident</b>
Youth, 1-17 yrs.	\$50	\$65
Adult, 18+ yrs.	\$65	\$80
Family of 2	\$105	\$135
Family of 3	\$145	\$195
Family of 4	\$180	\$245

Each additional family member after 4 is \$35.

**2016 Daily Admission Rates**

	<b>Resident</b>	<b>Non-resident</b>
Youth 1-17 yrs.	\$4.50	\$5.50
Adult 18+ yrs.	\$5.50	\$6.50

**Discount Family Swim Rates**  
**(6:00 - 8:00 PM on weekdays)**

\$2 for Residents  
 \$3 for Non-Residents  
 \*No one under the age of 18 will be allowed in the pool without a parent or legal guardian.

**Group Rates**

Groups of 20 or more receive a \$.50 per person discount off daily admission rate between 1:00 and 5:00 PM. To receive this discount, groups must present themselves at pool at one time. Group rates will not be honored if group members present themselves at different times. Groups of 20 or more must register ahead of time by calling 815-235-6114.

**Pool Rental**

The Read Park Family Aquatic Center is the perfect location for your next group outing. Perfect for birthday parties, church and company outings, or other festive occasions, the Aquatic Center can be reserved for a private party on Saturday and Sunday evenings beginning at 5:30 PM. Make your reservations at the Park District Office. The Aquatic Center will only be reserved between the hours of 5:30 and 8:30 PM on Saturdays and Sundays. Rentals must be a minimum of two hours. Other services available for Aquatic Center rentals include food and beverage services as well as themed parties, including decorations and games. Our staff will work with you to make your event truly special.

**2016 POOL RENTAL FEES**

Groups of 250 or less = \$150 per hour  
 Groups of 251 – 500 = \$300 per hour

Please note that Aquatic Center staff will take a count of the number of pool party guests. A full refund will be given if there is inclement weather the day of the event or notice is given 48 hours prior to the event.

**Pool Hours**

**May 28 - August 28**

<b>Weekdays</b>	
11:00 AM - 1:00 PM	Adult Lap Swim & Parent/Tot Swim
1:00 - 5:00 PM	Open Swim
6:00 - 8:00 PM	Discount Family Swim
	(May 28 - August 12)

**Saturdays, Sundays and Holidays**

11:00 AM - 1:00 PM	Adult Lap Swim & Parent/Tot Swim
1:00 - 5:00 PM	Open Swim

\*Parent/Tot Swim is for children under 10 years of age accompanied with parent. Children under 10 years of age must be accompanied with parent/guardian during open swim. Waterslide and diving board are closed from 11:00 AM to 1:00 PM during Parent/Tot and Adult Lap Swim times.

\*Hours of operation are subject to weather. Call (815) 801-SWIM for daily opening/closing information and swim lesson updates. Actual hours of operation are affected by inclement weather and staff availability.



**Yellow Creek Adventure Golf**  
**815-801-PUTT (7888)**

Take an adventure at the Yellow Creek Adventure Golf Course in Krape Park. The natural landscape and waterfall that sets Krape Park apart from other parks is evident in Krape Park’s mini-golf course, Yellow Creek Adventure Golf.

**Hours of Operation:**

**May 7 - May 22**

Saturdays and Sundays from Noon - 6:00PM

**May 28 - August 28**

Open Monday thru Sunday

Weekday Hours, Noon - 8:00PM

Weekend Hours, 11:00AM - 8:00PM

**September 3 – October 30**

Saturdays and Sundays from Noon - 6:00PM

**Admission Rates:**

Youth, 17 and younger \$3.00

Adult, 18 and older \$4.00

**Krape Park Carousel**

Saddle up for a ride on this historic attraction in Krape Park. Tickets are reasonably priced at 50 cents per ride.

**Hours of Operation:**

**May 7 - May 22**

Saturdays and Sundays from Noon - 6:00PM

**May 28 - August 28**

Open Monday - Sunday

Weekday Hours, Noon - 8:00PM

Weekend Hours, 11:00AM - 8:00PM

**September 3 – October 30**

Saturdays and Sundays from Noon - 6:00PM

**Boat Rental**

They’re back and they’re quack-tastic! This is the only place around where you can take a paddleboat ride in a duck, dragon or swan. Explore the waters of Yellow Creek with our fleet of canoes, kayaks and paddleboats.

**Hours of Operation:**

**May 28 - August 28**

Open Monday - Sunday

Weekday Hours, Noon - 8:00PM

Weekend Hours; 11:00AM - 8:00PM

**September 3 – September 25**

Saturdays and Sundays from Noon - 6:00PM

**Admission Rates per 1/2 hour:**

4-seat Paddleboat \$8

2-seat Paddleboat \$6

Canoe \$5

Kayak \$5

**Disc Golf at Krape Park**

The 18-hole course is located in the Flagstaff area of the park and uses the area’s natural terrain to present a picturesque yet challenging disc golf experience. The game is a cross between Frisbee and golf. The average hole is approximately 300 feet long. Each hole begins with a “drive” from a tee and ends with a “putt” into an elevated basket. The course is all weather and can be played year-round.

Call (815) 235-6114 or visit our website at [www.freeportparkdistrict.org](http://www.freeportparkdistrict.org) to learn more about this exciting sport or to find out more about leagues. If you are new to the game of disc golf, you can now rent discs from the boat rental building. Disc rentals are only \$2, so stop by and try this fun game.

**Group and Corporate Outings**

Looking for something new to do for your business, church, or group outing? Contact the Freeport Park District Office at (815) 235-6114 to set up your next event. We can customize a package that includes mini-golf, disc golf, boat rentals, picnic shelters, and/or carousel rides.





# Park Hills Golf Courses

- Park Hills Golf Club offers two 18-hole courses to challenge golfers of every ability. They are spread over 300 acres of rolling hillside in scenic Northwest Illinois.
- The East Course measures 6,477 yards, par 72, a 69.9 rating, with a slope of 116.
- The West Course measures 6,627 yards, par 72, a 71.3 rating, with a slope of 121.
- Rated 3-1/2 stars by Golf Digest Places to Play 2005-2006 for great value and good service.
- Beautiful watered fairways, greens and tees. Newly redesigned bunkers.
- 300-yard practice range with natural grass tees and 15 hitting stations. Two large practice putting greens.
- Carts available but not mandatory - walkers welcome - pull carts available.
- Dining room offers breakfast and lunch menu.
- Outings available.

## Driving Range

The driving range is an excellent place to practice your swing. Stop by today to sharpen up your game! There is also a practice putting green.

## Pro Shop

Be sure to stop here for all of your golfing needs. We have a great selection of clubs, clothing and shoes. If we do not have an item you need, we can usually get it. So stop by and get fully equipped for the year.

## Golf Lessons

It's never too late to learn a few new golf techniques. If you're having trouble with your swing or want to learn how to play golf, sign up for some golf lessons today. Golf lessons are also an excellent gift idea. Both private and group lessons are available.



## Club Repair

Do you have grips on your clubs that are slick and worn out? Do you have a bent or broken shaft on one of your clubs? Bring them out to get them ready for the year. Now is an excellent time to get those things done that you've been putting off all year!

## Outing Area

If you are planning a golf outing, be sure to look into a day at Park Hills. Our staff can make your outing a complete success from beginning to end. Tee times, carts and a delicious catered meal will make your outing very enjoyable. To book your outing, call the Pro Shop at 235-3611. There will be alcohol available on the course for outings, please call the Pro Shop for more information.

## Green Fee Specials

On Mon. and Thurs. only, Park Hills offers two great golf specials. From 6:00am - 1:00pm you can play 18 holes with a cart for just \$30 per person, and after 1:00pm it's only \$24 !!! Be sure to come out and take advantage of these great golf specials this year at Park Hills.

## Twilight Special

Everyday at Park Hills, the Twilight rate of \$24 per person for 18 holes with a cart starts at 5:00pm (on Mon. and Thurs. 1:00 PM). This is a great way to get in a practice round after work or on the weekends.

## Leagues

Interested in joining a league? We have leagues for men, women, seniors, and juniors. It's easy to join and fun to get out with your friends every week. Just ask Jeff or one of the pro shop staff on how to join.

Visit the course online at  
[www.parkhillsgolfcourse.com](http://www.parkhillsgolfcourse.com)



## Stephenson County Historical Society

1440 S. Carroll Avenue, Freeport, IL  
815-232-8419 • [www.stephcohs.org](http://www.stephcohs.org)

Whether you're seeking a leisurely stroll through beautifully landscaped grounds, or learning a bit of history, or maybe just being a little nosy about how people lived more than a hundred years ago, the campus of the Stephenson County Historical Society has what you need. Linger at your heart's content at any or all of these attractions:

- The Arboretum with its cultivated collection of trees and flowers and our Butterfly Garden offer a place for casual walks along winding drives and across green lawns.
- The meticulously preserved Victorian Era home of the Oscar Taylor family built in 1857 in the Italianate style offers a glimpse into the life-style of an educated and wealthy family in the Midwest. The home that is on the National Register of Historic Places.
- The 1850s Log Cabin contrasts with the Taylor Home, offering a time-warp experience back to a living situation that was rugged and simple.
- The 1920s era one-room School House lets you get a feel for the days when "reading, writing and arithmetic were taught to the tune of a hickory stick."
- The Industrial Museum offers a wide variety of exhibits: Henney Motor Company vehicles; a Stephens Salient Six automobile, and a Stover gas engine, all made in Freeport. In addition there are Rawleigh salesman's wagons of the era before the automobile.

- The Toy Museum offers the world's largest collection of toys made by Freeport's famous Arcade Manufacturing Company. In addition there is a display of Structo toys, also made in Freeport.

Other features of the museums include a nationally renowned collection of Arcade Toys, a display of Civil War artifacts, as well as displays highlighting our community's links to Jane Addams, the Lincoln-Douglas Debates, and nationally distributed products manufactured locally.

**Museum Hours:** Wednesday to Sunday, Noon to 4pm.

**Admission:** \$8.00 adults; \$4.00 Children (6-12 years). Free to Historical Society members.

**Group Tours:** Pre-arranged Group Tours can be scheduled for days and times when the Museum is normally closed.

**Call the Historical Society for details – (815) 232-8419.**

### Museum Gift Shop

- Rawleigh Products—salves, ointments, vanilla and more
- Wide range of books on local history
- Great selection of books, toys and games for children of all ages.

The Gift Shop is open during regular Museum hours, during special tours or by appointment. All proceeds from the Gift Shop support the on-going activities of the Museum.

### Arboretum Weddings & Private Parties

The Taylor Family held dozens of weddings and parties in their arboretum—and now you can too. Plan your next outdoor event in the splendid setting of a 150 year plus arboretum of historic flowers and many non-native trees. Facilities available include a gazebo, restrooms, kitchenette and bride's dressing area.

**Call the Historical Society (815) 232-8419 for available dates and detailed information.**

## Historical Society Membership

By becoming a member of the Stephenson County Historical Society you can show your support for preserving our local history. Benefits include:

- Free admission to the Museum
- Bi-monthly newsletters
- Special invitations to members-only events
- Discount rates at the Gift Shop and for some events
- A sense of pride in helping preserve our past

**For a copy of the membership brochure, call (815) 232-8419 or E-mail us at: [director@stephcohs.org](mailto:director@stephcohs.org)**

## Historical Society Programs

- **Monday, April 11th** – Special showing at the Lindo Theatre of the 1936 film “Earthworm Tractors”
- **Thursday, April 21st** – Stephenson County Historical Society Annual Dinner
- **Friday & Saturday, May 13 & 14** – Spring Garden Fair
- **Thursday, June 16th** – Ice Cream Social

## Scout Badge Workshops

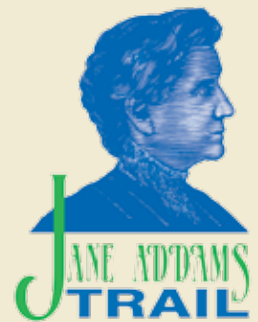
The museum offers programs designed to assist Scouts to meet the requirements for badges in American Heritage, archeology, American Cultures and Citizenship. Sessions are led by qualified staff. Fees are charged, but include the costs of the relevant workbook and admission to the museums. It will be the Scout Leaders’ responsibility to provide the badges. Sessions are offered on Saturdays and during the summer.

**Call for details – (815) 232-8419.**



- Over four miles of trails through 133-acres of forests, restored tall grass prairie and two streams.
- Hike, jog, picnic, photograph, bird watch, animal track, identify plants...
- Hard-packed accessible trail of 1/3 mile starts at main grounds and goes through the forest.
- Oakdale is open to the public dawn until 10:30 PM
- Picnic shelters, a free standing outdoor grill and fire rings are also available first-come-first-serve or for rent.

- Open to bicyclists, hikers, snowmobiles and cross-country skiers.
- 17 miles from Tutty’s Crossing Trailhead in downtown Freeport to Wisconsin state line where it connects to the Badger Trail.
- 4.1 miles asphalt paved path from Tutty’s Crossing Trailhead to Wes Block Trailhead. 10 foot wide, level grade, crushed limestone surface from Wes Block Trailhead to Wisconsin state line.
- 22 bridges including the historic Van Buren Bridge across the Pecatonica River, erected in 1885, and a Covered Bridge in Orangeville.
- Bordered by the Pecatonica River, Richland Creek and Cedar Creek.
- Travels through historic downtown Freeport, the Old River School Historic District Neighborhood, and past natural wetlands, old oak woods, grassland prairies, exposed rock embankments, active farms, and several small communities as well as the Village of Orangeville.
- Part of the Grand Illinois Trail that traverses northern Illinois from Lake Michigan to the Mississippi River.



Gunkel Shelter



Koenig Theater



Krape Community Building



Oakdale Mogle Center



**Freeport Park District has a variety of facilities available for gatherings** such as reunions, picnics, weddings and other group functions. Outdoor Shelters and picnic areas are available on a “first come, first served” basis to the general public, unless reserved and payed for through the District’s Facility Rental/Reservation process. This can be done at the Freeport Park District Office, or by calling 815-235-6114 ext. 0. Rental fees are required to be payed in full at the time of the reservation. Please refer to the next page for a complete list of Facility Rental/Reservation policies and regulations.

**OUTDOOR SHELTER/FACILITIES**

	Resident	Non-Resident	Deposit	Seating Capacity
<b>Krape Park Shelters/Facilities</b>				
<b>Gunkel Shelter</b>				
Weekdays	\$40 (1/2) \$60 (entire)	\$55 (1/2) \$90 (entire)		75 (1/2) 200 (entire)
Weekends & Holidays	\$60 (1/2) \$90 (entire)	\$80 (1/2) \$115 (entire)		
<b>Flagstaff Waterfall Shelter</b>	\$40	\$55		96
<b>Flagstaff Playground Shelter</b>	\$40	\$55		112
<b>Koenig Shelter</b>				
Weekdays	\$40	\$55		64
Weekends & Holidays	\$60	\$90		
<b>Koenig Theater</b>	\$75	\$100	\$50	550
<b>Commissioners’ Garden Gazebo</b>	\$75	\$100		N/A

**OTHER SHELTERS/FACILITIES**

<b>Taylor Park Shelter</b>	\$40	\$55		128
<b>Read Park Shelter</b>	\$40	\$55		24
<b>Oakdale Shelter</b>	\$40	\$55		48
<b>Oakdale Newell Shelter</b>	\$40	\$55		48
<b>Bidwell Shelter w/restrooms</b>	\$40	\$55	\$50	24

**INDOOR FACILITIES**

	Resident	Non-Resident	Deposit	Seating Capacity
<b>Krape Community Building</b>	\$85	\$130	\$50	80
<b>Read Park Pavilion</b>	\$125	\$175	\$50	80
<b>Oakdale Mogle Center</b>	\$60	\$90	\$50	24

Contact the Park District for availability and rates on ball diamonds and sand volleyball courts, as well as other park areas such as the Civic Gardens.

## Facility Rental/Reservation Policies

A \$50 deposit is required for all indoor facility rentals and is due when you pick up your key. The deposit will be refunded when you return the key, if the facility you used has no damage and there is not excessive clean-up required by the Park District staff.

Reservations can only be made within each calendar year. A \$50 surcharge will be added to your rental fee for all reservations outside the current calendar year up to 1 year in advance.

An additional fee of \$100 will be charged to groups of 150 or more utilizing a Park District facility.

Non-profit organizations wishing to conduct fund-raisers on Freeport Park District property must apply for a permit at the Park District Office. If the organization is not renting a facility or paying a user fee, the organization shall pay a \$50 fee. For further details about these policies, contact the Park District Office, (815) 235-6114.

## Facility Rental Cancellation Policy

If your group must cancel a reservation, the following policy is in effect:

Less than 4 weeks notice .....	No refund
4-5 weeks notice.....	25% refund
6-7 weeks notice.....	50% refund
8 weeks notice.....	75% refund

## Park Usage Rules

The Park District rules, regulations and ordinances, which govern public usage of Park property and facilities, are available at the Park District Office. A summary of the main rules are:

- All parks where rental facilities are located open at dawn and close at 10:30 pm. All other parks close at dusk. (C)
- Pedestrians and bicyclists always have the right of way over motor vehicles. (B)
- Park patrons may feed the white domesticated ducks in Krape Park. Feeding wild ducks and geese or any other wild animal is prohibited. (D)
- Under no circumstances are temporary signs, balloons or any other items to be pinned, stapled or otherwise attached or placed on any tree, park sign or along the roadway. This action will be considered littering. (C)
- Motor vehicles are restricted to roadways, parking lots or designated parking areas only. Vehicles are not permitted on lawns, park walk ways or trails at any time. This prohibition includes loading and unloading purposes. (B)
- Fires are allowed only in designated metal fire places that are provided by the district. Use of all privately owned grills (gas or charcoal) is not permitted without prior approval from the District. Use of gas grills will require a certificate of insurance from your homeowner insurance carrier naming the Park District as additionally insured(A)

- Tents, nets or canopy structures are not permitted without prior approval of the administrative office. (B)
- Picnics and events utilizing third party suppliers (tent rental, caterers, etc.) must be approved by the Park District in advance and may require the purchase of a liability insurance policy naming the Park District as additionally insured for the duration of the event including setup and breakdown dates. The use of all third-party suppliers require least 30 days advance notice to the event.
- The use of amplified sound (public address systems, radios, boom box, musical instruments) is prohibited unless authorized in writing by the Director. Groups seeking authorization should consider use of the Koenig Theatre. (B)
- The use of profane, abusive or loud, boisterous language or conducting oneself in a disorderly manner is prohibited. (A)
- Activities that damage or disturb any natural or man-made feature are prohibited. (A)
- Possession or consumption of alcohol and/or illegal drugs is prohibited. (A)
- The discharge or possession of firearms, fireworks or explosives is prohibited. (A)
- Wading or swimming in all district creeks and ponds is prohibited. (D)
- Minors under 10 years of age shall at all times be under the direct supervision and control of a parent, guardian or responsible adult custodian. The applicant/user is responsible for monitoring the conduct of their guests or invitees. (D)
- All dogs and pets must be on a leash, no longer than 10 feet, at all times. Hitching or tying an animal to a tree, bush or shrub is prohibited. The owner is responsible for the conduct of the animal and shall carry equipment and supplies for removing feces and shall place feces deposited by the dog or pet in an appropriate receptacle. Continuously barking dogs and/or animals displaying overly aggressive behavior will not be permitted in any park. (D)
- All waste and trash must be deposited in garbage receptacles. (A)

## Picnic Kits

Need some sports equipment for your picnic, family reunion, company outing or other gathering? Our picnic kit has a volleyball and net, a playground ball, a football, frisbees, a softball bat and ball and a basketball. Payment, including deposit, is due at the Park District Office when you reserve the kit. Call (815) 235-6114, ext. 0, for more details. Fee: \$5 per day, plus a \$25 deposit.

### Freeport Frisbee Fanatics

The Freeport Frisbee Fanatics is a non-profit group dedicated to enhancing and promoting disc sports in Freeport. The club is open to everyone interested in playing disc golf. The annual fee for membership is \$20 and covers discounts in merchandise and a steak dinner at the end of the year. Please check out events at the bulletin board at the top of Flagstaff Hill in Krape Park. A disc golf league, organized by Freeport Frisbee Fanatics, takes place on Saturdays at 10am. For more information about disc golf leagues and tournaments, contact Paul Buss at 815-908-9329.

### Freeport Little League

Little League baseball provides an opportunity for children to learn the lifetime skills of leadership, sportsmanship, and teamwork. Freeport Little League offers each child the same opportunities and instills many life-long memories in children. For more information, please call 815-821-3069 or 815-275-9828. Visit us online at [www.quickscores.com](http://www.quickscores.com).

### Junior Tackle Football

For over thirty years, the Jr. Tackle program has taught our youth the value of team work, discipline and dedication through the basics of football. In a fun environment, Jr. Tackle looks to not only instill these strong character traits, but more importantly, create long lasting memories and friendships for the youth in our community. For more information, like Freeport Jr. Tackle Football on Facebook, or email [jrtackle@outlook.com](mailto:jrtackle@outlook.com). JOIN THE TRADITION.

### Little Cubs Field

A nearly exact duplicate of the Cubs' Wrigley Field - on a much smaller scale - it provides a fun venue for people of all ages to enjoy America's pastime. More information is available at [www.littlecubsfield.com](http://www.littlecubsfield.com), or email [info@littlecubsfield.com](mailto:info@littlecubsfield.com).

### Freeport Soccer Club

Are you interested in competitive soccer? The Freeport Soccer Club offers youth ages 7-17 an opportunity to play in a competitive league as well as tournaments. For more information, call Dan Holden at (815) 235-4694 or Sarah Hasken at (815) 233-5680.

### Freeport Aquatic Swim Team (FAST)

Do you like to swim? Can you swim the length of the pool? Would you like to meet some new friends? Did you know that there is a swim team in Freeport just for you? We can offer you a family-friendly environment where you can develop your skills in swimming, the Life-Long Sport. For more information, visit our website at [www.freeportaquaticswimteam.com](http://www.freeportaquaticswimteam.com).

### Firebaugh Observatory/Planetary Studies Foundation

The Firebaugh Observatory, located next to the Park Hills Golf Course, will be open to the public on the 1st and 3rd Saturdays May through September. For more information about Firebaugh Observatory and the Planetary Studies Foundation, please contact Jim Dole at 815-291-3072 or visit the Planetary Studies Foundation website at [www.planets.org](http://www.planets.org).

### Northwest Illinois Audubon Society

The Northwest Illinois Audubon Society, which is a chapter of the National Audubon Society, will be offering some programs at the Oakdale Nature Preserve. These programs will be open to the public at no charge. However it is important that reservations be made ahead of time because space is limited. For more information or to register, contact Richard Benning at 815-865-5279.

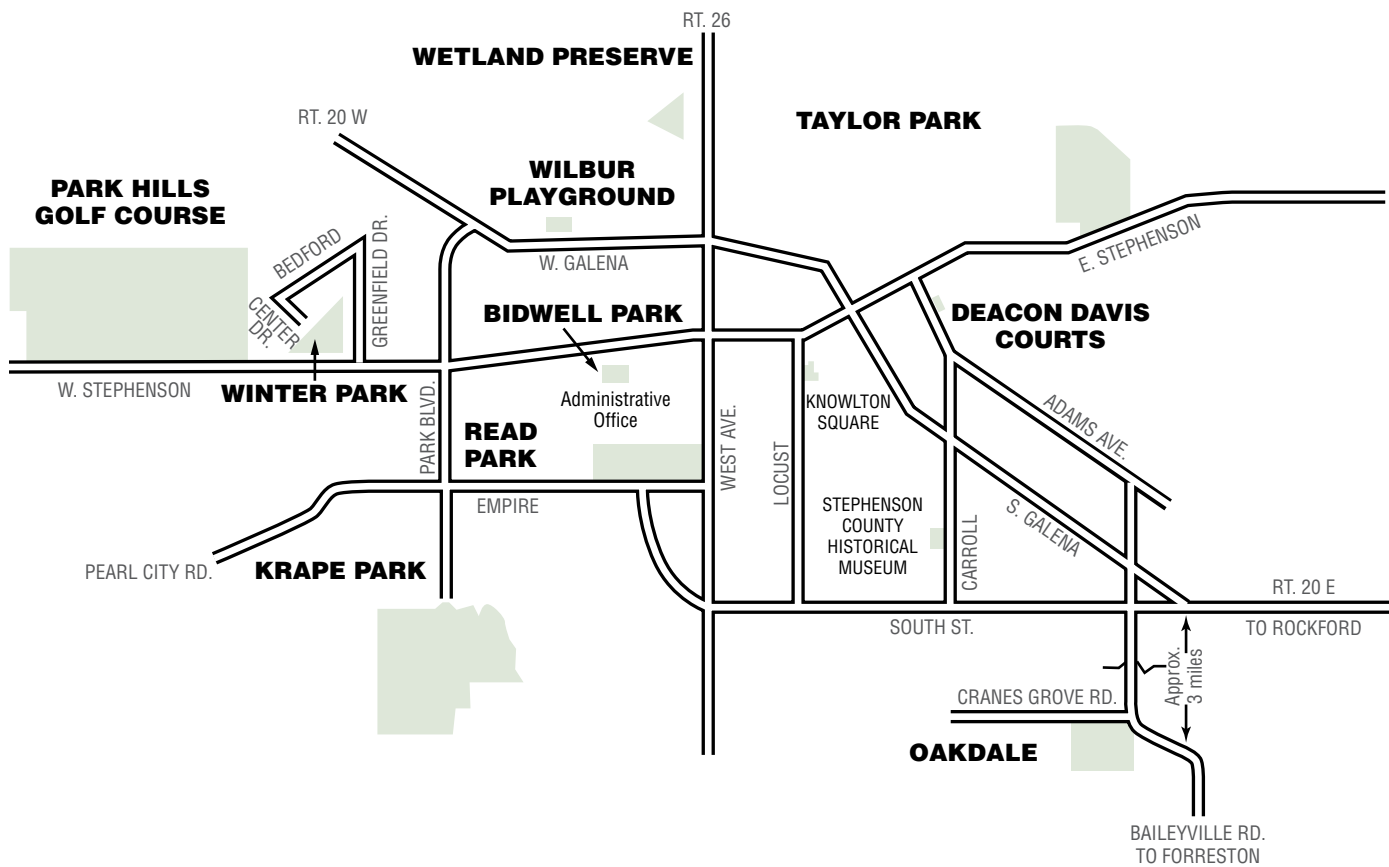
### Freeport Crush Softball Club

The Freeport Crush Fastpitch traveling softball team was formed thirteen years ago with one goal in mind, to make your daughter the best possible student-athlete that she can be. We also teach strong fundamentals, sportsmanship, good attitude and politeness towards all. For more information, please visit our website at [www.freeportcrush.com](http://www.freeportcrush.com) or call Jacey Ensor at (815) 541-0696.

### Horseshoe Pitching

Horseshoe leagues are now forming at the horseshoe pits located at Park Hills Golf Course (next to Firebaugh Observatory). For more information, call Steve Kampmeier at 815-235-7226. **City Horseshoe League:** Tuesdays at 6:30 PM, beginning May 3. *Tournament Dates TBA*





### Great Outdoor Fun at Freeport Parks

**Krape Park**  
1799 S. Park Blvd.

- Picnic Tables
- Shelters
- Baseball
- Food Concessions
- Merry-Go-Round
- Play Area
- Tennis
- Volleyball
- Swimming
- Hiking Trails
- Canoeing
- Bar-B-Que Grills
- Mini-Golf
- Restrooms (in season)
- Football
- Ice Skating
- Soccer
- Fishing
- Restrooms (in season)

**Park Hills Golf Course**  
3240 W. Stephenson

- Mini-Golf
- Shelters
- Food Concessions
- Restrooms (in season)

**Taylor Park**  
900 E. Stephenson

- Picnic Tables
- Shelters
- Food Concessions
- Bar-B-Que Grills
- Play Area
- Baseball
- Basketball
- Tennis
- Volleyball
- Swimming
- Hiking Trails
- Canoeing
- Restrooms (in season)

**Read Park**  
1200 Park Lane Dr.

- Picnic Tables
- Shelters
- Food Concessions
- Swimming
- Play Area
- Baseball
- Tennis
- Volleyball
- Hiking Trails
- Restrooms (in season)
- Ice Skating
- Soccer

**Oakdale**  
4433 S. Cranes Grove Rd.

- Picnic Tables
- Shelters
- Hiking Trails
- Restrooms (in season)

**Winter Park**  
2023 Bedford Rd.

- Picnic Tables
- Shelters
- Baseball
- Soccer
- Play Area

**Wilbur Playground**  
Warren Ave.

- Picnic Tables
- Shelters
- Play Area

**Deacon Davis Courts**  
Liberty and Jackson

- Baseball
- Restrooms (in season)

**Knowlton Square**  
Locust at Broadway

- Picnic Tables
- Play Area

**Bidwell Park**  
1124 W. Pleasant

- Picnic Tables
- Shelters
- Baseball
- Play Area

**Wetland Preserve**  
Rte. 26 N.

- Hiking Trails
- Fishing
- Shelters

**Stephenson County Historical Museum**  
1440 S. Carroll Ave.

- Picnic Tables

- Key**
- Picnic Tables
  - Shelters
  - Baseball
  - Basketball
  - Football
  - Tennis
  - Volleyball
  - Soccer
  - Swimming
  - Golf
  - Ice Skating
  - Sledding
  - Cross-Country Skiing
  - Hiking Trails
  - Fishing
  - Canoeing
  - Mini-Golf
  - Restrooms (in season)
  - Food Concessions
  - Merry-Go-Round
  - Bar-B-Que Grills
  - Play Area



1122 S. Burchard Ave.  
Freeport, IL 61032

Postal Customer  
Freeport, IL

PRSR STD  
U.S. POSTAGE PAID  
PERMIT #135  
FREEPORT, IL

# YOU GAVE US AN A!

When you need quality healthcare, trust FHN. We are committed to excellence and are proud to have received national recognition for both quality and safety initiatives from organizations including Leapfrog and Healthgrades. But in a survey of over 3,000 people in northwest Illinois, our own patients gave us a score that really says it all: 94% would recommend us to their friends and family. That's an A, and the equivalent of a 3.9 on a 4.0 GPA (grade point average) scale. Thank you for choosing FHN – we're proud to have made **your** honor roll!

For more information call 1-877-6000-FHN (1-877-600-0346) ext. 973.



## SPECIALTIES

- Acupuncture
- Allergy, Asthma and Immunology
- Anesthesiology
- Audiology
- Cancer Treatment
- Cardiology
- Chiropractic
- Counseling Services
- Dentistry
- Diagnostic Services
- Ear, Nose and Throat
- Emergency Services
- Eye Care Services
- Family Practice
- Gastroenterology
- Gynecology
- Hematology
- Hospice
- Hospitalist Program
- Infectious Diseases
- Internal Medicine
- Medical Oncology
- Midwifery
- Nephrology
- Neurology
- Nurse Practitioners
- Obstetrics
- Occupational Medicine
- Ophthalmology
- Orthopaedics
- Pain Management
- Pediatrics
- Physician Assistant
- Podiatry
- Psychiatry
- Psychology
- Pulmonology
- Radiation Oncology
- Radiology
- Rehabilitation:
  - Physical, Occupational, and Speech Therapy
- Rheumatology
- Sleep Medicine
- Sports Medicine
- Surgery
- Urology
- Weight Loss Services
- Wound Care

 We're here, for you.  
**FHN**  
www.fhn.org

## LOCATIONS

Freeport • Forreston • Galena • Lanark • Lena • Mt. Carroll • Orangeville  
Pecatonica • Savanna • Stockton • Warren • Madison\* • Rockford\*

\*Referral Relationships